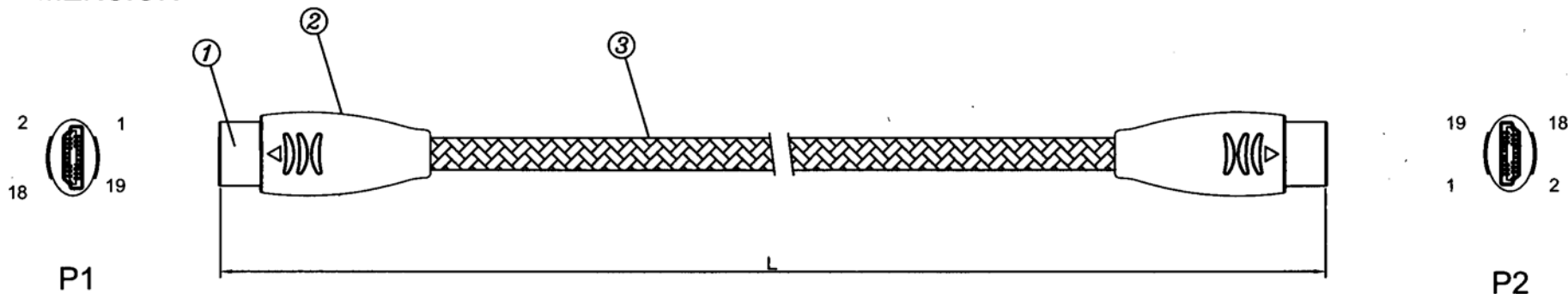


1. DIMENSION



NAME	L	NAME	L
HDMI-83005-G3	500±20	HDMI-83046-G3	15FT4576±100
HDMI-83009-G3	3FT914±30	HDMI-83050-G3	5000±150
HDMI-83010-G3	1000±30	HDMI-83076-G3	25FT7620±150
HDMI-83015-G3	1500±50	HDMI-830100-G3	10000±200
HDMI-83018-G3	6FT1830±50	HDMI-830107-G3	35FT10668±200
HDMI-83020-G3	2000±50		
HDMI-83025-G3	2500±50		
HDMI-83027-G3	9FT2743±100		
HDMI-83030-G3	3000±100		
HDMI-83036-G3	12FT3658±100		

- 1-1 NOTE:
 1. 100 % OPEN AND SHORT TESTING.
 2. VOLTAGE : 500V DC
 3. DIELECTRIC : 300V AC FOR 3ms
 4. INSULATION RESISTENCE : 50M ohm
 5. CONDUCTOR RESISTENCE : 3 ohm/m

1-2 PART LISTS

3	HDMI CABLE $\phi 8.3$	NYLON NET BLACK
2	PLUG MOLDING	PVC BLACK
1	HDMI 19PIN PLUG	BRASS GOLD PLATED.
NO.	PART'S NAME	MATERIAL. FINISHED. COLOR

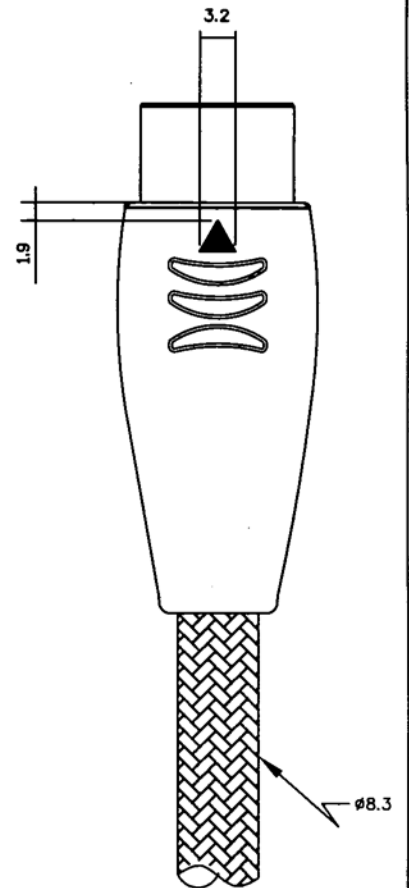
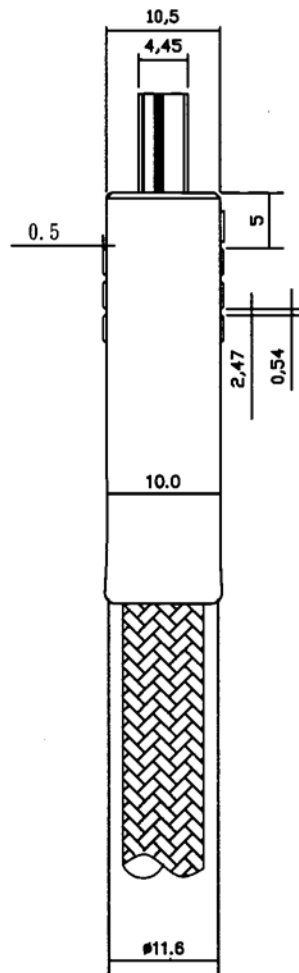
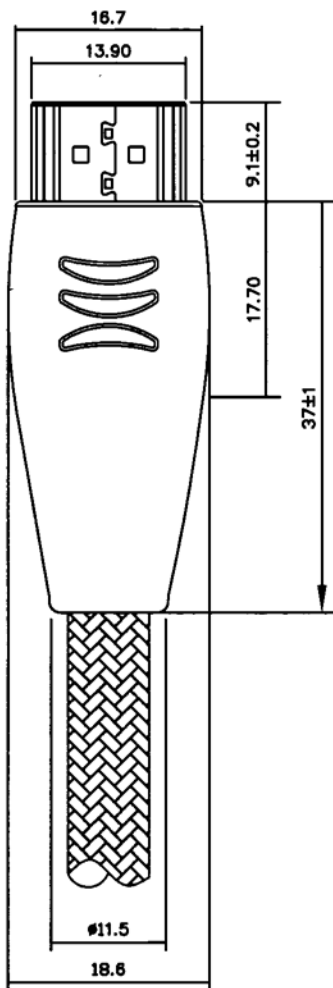
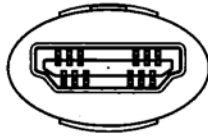
1-3 PINOUT:

P1	COLOR	P2	P1	COLOR	P2
1	WHITE/RED	1	10	WHITE/BLACK	10
2	BRAID	2	11	BRAID	11
3	WHITE	3	12	WHITE	12
4	WHITE/GREEN	4	14	YELLOW	14
5	BRAID	5	15	ORANGE	15
6	WHITE	6	16	RED	16
7	WHITE/BLUE	7	17	PURPLE	17
8	BRAID	8	18	WHITE	18
9	WHITE	9	19	GREEN	19
			SHELL	BRAID	SHELL

REV : 1

△						表面	
△						顏色	
△						COLOR	
△						厚度	
△						處理	
△						PROCESS	
△						材質	
△						MATERIAL	
記號	修正	REVISION	日期	特准	承認	公蓋	
MARK	REVISED BY	DATE	SIGNED	DATE	APPROVED	UNIT	
	許文勳	04 09 30		許文勳	04 09 30	93 9. 30	
							mm
Ruby-Electronics.com 件 PART NO HDMI-830xx-G3 號 DESCRIPTION HDMI 名稱 CONNECTOR CABLE 圖 DRAWN NO. SP-1552 號 SHEET 1/5							

2. HDMI PLUG DIMENSION

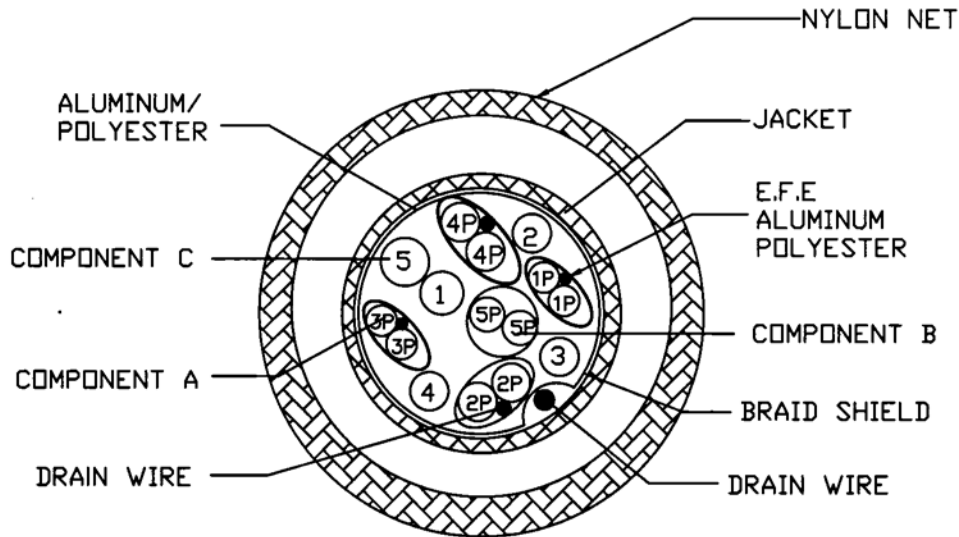


STS-3

L ≤ 4	±0.2
4 < L ≤ 16	±0.3
16 < L ≤ 63	±0.4
63 < L ≤ 250	±0.5
250 < L	±0.7

名稱	DESCRIPTION.	圖號	DRAWN NO.	SHEET
	HDMI CONNECTOR CABLE		SP-1552	2

3. CORD SPEC.



3-1. Product description

Component A: (28AWG(7/0.127T)x1P+1TG)x4

Tinned copper stranded, Foam polyethylene (skin) insulated, twisted pair. (Each pair individually with 28AWG(7/0.127T) stranded tinned copper drain wire, Overall extended film edge aluminum/polyester shield).

Component B: 28AWG(7/0.127T)x1P:

Tinned copper stranded, high density polyethylene insulated, twisted pairs.

Component C: 28AWG(7/0.127T)x5C:

Tinned copper stranded, high density polyethylene insulated, multi-conductor.

Component A,B,C. together, overall aluminum/polyester shield, with 24AWG(7/0.20T)

stranded tinned copper drain wire, plus 85% minimum coverage tinned copper braid shield 16/10/0.12T.

Flame retardant PVC jacket.

3-2. Insulation:

Conductor		Color code		
Component	AWG	MAT'L	O.D	
A	28 (7/0.127T)	FDAM PE (skin)	1.00±0.05mm	1P:White & Red 2P:White & Green 3P:White & Blue 4P:White & Brown
B	28 (7/0.127T)	H-D PE	0.70±0.03mm	5P:Yellow & Orange
C	28 (7/0.127T)	H-D PE	0.70±0.03mm	1.Black 2.Brown 3.Red 4.Green 5.Blue

名 稱	DESCRIPTION. HDMI CONNECTOR CABLE	圖 號	DRAWN NO. SP-1552	SHEET 3
--------	---	--------	-----------------------------	-------------------

3. CORD SPEC.

3-3. Jacket:

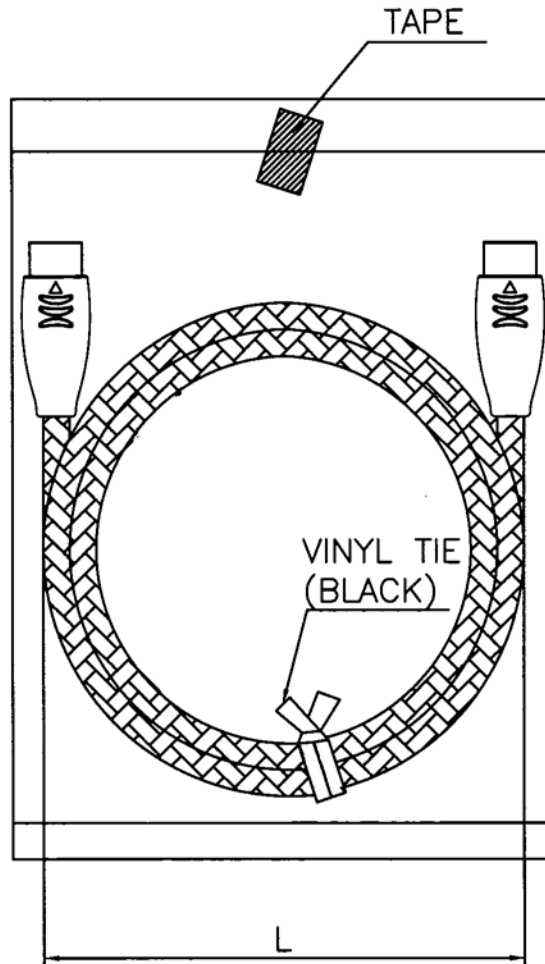
MAT'L	O.D	Color
FR-PVC	8.30±0.20mm	black
Marking	Not print word	

3-4. Electrical & Physical properties

- a. UL & CAS style: UL 20276
- b. Temperature & Voltage rating: 80°C 30V
- c. Conductor resistance: 28AWG--237 ΩHMS/KM max. at 20°C
- d. Spark test: 2KV In air.

名 稱	DESCRIPTION. <i>HDMI CONNECTOR CABLE</i>	圖 號	DRAWN NO. <i>SP-1552</i>	SHEET <i>4</i>
--------	---	--------	-----------------------------	-------------------

4. PACKAGE



NAME	L	NAME	L
HDMI-83005-G3	(90)	HDMI-83046-G3	(120)
HDMI-83009-G3	(110)	HDMI-83050-G3	(120)
HDMI-83010-G3	(120)	HDMI-83076-G3	(200)
HDMI-83015-G3	(120)	HDMI-830100-G3	(200)
HDMI-83018-G3	(120)	HDMI-830107-G3	(200)
HDMI-83020-G3	(120)		
HDMI-83025-G3	(120)		
HDMI-83027-G3	(120)		
HDMI-83030-G3	(120)		
HDMI-83036-G3	(120)		

名 稱	DESCRIPTION. HDMI CONNECTOR CABLE	圖 號	DRAWN NO. SP-1552	SHEET 5
--------	---	--------	-----------------------------	-------------------